

## General information to be included on all invoices

The following information must be included on invoices regarding AET:

<b>Invoicing reference</b>	Name of technical contact person/project number. Example: <b>Kristian Bager/10240</b> .
<b>Invoicing address</b>	The invoicing address depends on the project.
<b>Delivery address</b>	The delivery address is stated in our commercial and/or technical documents and will depend on the project.
<b>Supplier VAT number</b>	The supplier's own VAT number must be stated on the invoice.
<b>AET VAT number</b>	AET's local VAT number must be stated on the invoice, depending on the delivery address. Please find below specific information by country.
<b>Statistical information</b>	- INTRASTAT number - Country of origin - Unit weight.
<b>Split of invoices</b>	Invoices must be split in two: - one for workshop activities/production - one for work carried out on AET site (when the scope of supply includes erection/commissioning).
<b>Payment information</b>	IBAN number and SWIFT code.

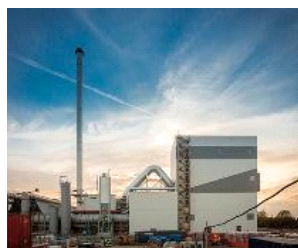
## LATEST COMMISSIONED PROJECTS

[> GO TO ALL BIOMASS PROJECTS](#)



The Biolaq Energies project, in Lacq, is a biomass-fired CHP plant of 54 MW, that utilises forestry wood, and clean, uncontaminated residues from wood processing.

[Read more about Biolaq](#)



Tilbury Green Power is a 125 MW waste wood-fired plant, which commenced operations in 2017.

[Read more about Tilbury Green Power](#)



JG Pears - Newark is a 42 MW MBM-fired cogeneration plant, which commenced operations in 2018.

[Read more about JG Pears - Newark](#)



Akuo Energy - CBN is a 63 MW wood-fired cogeneration plant, which commenced operations in early 2019.

[Read more about Akuo Energy - CBN](#)

## FOCUS ON

[> Read full Focus](#)   [> Go to Archive](#)

### Zignago Power s.r.l.–successfully producing Green Energy in Italy

The 49 MW Zignago Biomass power plant in Italy, owned and managed by Zignago Power s.r.l., belonging to the Marzotto family empire, has since its installation in 2013 been running with a very high availability (98,8%). The plant utilises wood residues and agricultural waste such as straw, miscanthus and maize. [>Read more](#)



---

[www.aet-biomass.com](http://www.aet-biomass.com) // [Home](#) // [Suppliers & Invoicing](#) // [Invoicing information](#)

---

[> Cookies](#) // [> Sitemap](#) // [> Terms of use](#) // © AET

---

Aalborg Energie Teknik a/s   Alfred Nobels Vej 21 F   9220 Aalborg East, Denmark   Tel +45 96 32 86 00   [aet@aet-biomass.com](mailto:aet@aet-biomass.com)