



Biomass-Fired Plants

PowerCrop - Russi

Akuo Energy - CBN

JG Pears - Newark

Tilbury Green Power

Østkraft

Cofely - Biolacq Energies

Cofely - BES VSG

Cofely - SODC Orleans

Roths CoRDe

Zignago Power

Cofely - BCN

Verdo Production - Randers

Western Wood Energy Plant

FunderMax - Neudörfel

Linz-Mitte

Boehringer Ingelheim

Schneider - Biopower

Swiss Krono - Heiligengrabe

Pfleiderer - Neumarkt

Pfleiderer - Gütersloh

Egger - Pannovoges

EPR - Glanford

Service and O&M

Aarhus Karlshamn

Kronoply

Western Wood Energy P. O&M

AET References

AET delivers biomass-fired boilers, Combined Heat and Power (CHP) Plants, Power Plants, Service, O&M and SNCR deNOx Systems.

AET has a solid track record of supplying and servicing biomass-fired boilers, cogeneration plants and power plants. When servicing our customers we have a strong focus on providing:

- | Process integration/heat balance optimisation
- | High efficiency
- | High availability
- | High fuel flexibility
- | Open, efficient and proactive cooperation
- | Professional and experienced project management.

We believe that the above advantages, combined with a solid track record, will result in a sound project and a favourable business case for you as a potential customer.

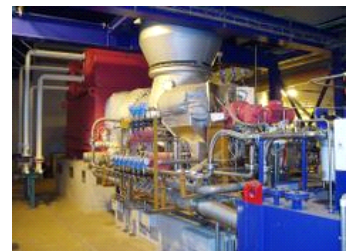
[Click here to view AET references for biomass-fired plants](#)

[Click here to view AET references for Service and O&M](#)

[Click here to view our references for AET SNCR deNOx Systems](#)



[Roth's CoRDe CHP Plant, Scotland.](#)



AET provides after sales service. Shown on the picture: [FunderMax - Neudörfel, Austria.](#)



AET SNCR deNOx system.



Rothes CoRDe Ltd is a biomass-fired cogeneration plant in Scotland fuelled by a whisky by-product and clean wood.

[Read more about Rothes CoRDe.](#)



The SODC Orléans cogeneration plant supplies district heating to 15,000 homes, equivalent to 27% of the city of Orléans.

[Read more about SODC Orléans](#)



In Landes, France, a 50 MW biomass-fired plant was successfully delivered to Cofely Engie (former GDF SUEZ) in May 2015.

[Read more about BES VSG.](#)



The Biolacq Energies project, in Lacq, is a biomass-fired CHP plant of 54 MW, that utilises forestry wood, and clean, uncontaminated residues from wood processing.

[Read more about Biolacq](#)

FOCUS ON

[> Read full Focus](#) [> Go to Archive](#)

Zignago Power s.r.l.–successfully producing Green Energy in Italy

The 49 MW Zignago Biomass power plant in Italy, owned and managed by Zignago Power s.r.l., belonging to the Marzotto family empire, has since its installation in 2013 been running with a very high availability (98.8%). The plant utilises wood residues and agricultural waste such as straw, miscanthus and maize. [>Read more](#)



www.aet-biomass.com // [Home](#) // [References](#)

[> Cookies](#) // [> Sitemap](#) // [> Terms of use](#) // © AET

Aalborg Energie Teknik a/s Alfred Nobels Vej 21 F 9220 Aalborg East, Denmark Tel +45 96 32 86 00 aet@aet-biomass.com