



AET Biomass Boiler Plant

The AET Biomass Boiler is design for you who want to integrate biomass-fired boilers in to cogeneration and power plants and appreciate excellent and well-documented performance and availability.

The Benefits for You

The benefits of an AET Biomass Boiler plant includes:

- The unique [AET Combustion System](#)
 - High combustion efficiency
 - Low in-house power consumption
 - Low flue gas emissions
 - Best Available Technology
- [High fuel flexibility](#)
 - Lower operating costs
- High boiler efficiency
 - Good business case for you
- High availability
 - Improved business case for you.

Determining the optimal design for an AET Biomass Boiler involves many parameters such as optimal operating conditions, fuel, feed water and steam properties and characteristics.

AET can assist you to optimise the plant parameters, not only for the boiler, but also for the complete plant. Our expert staff have many years of experience and extensive knowledge of steam cycles, boiler systems and steam turbines.

AET Biomass Boiler Parameters

An [AET Biomass Boiler](#) can be designed for almost all types of biomass and this [high fuel flexibility](#) can give you a low cost basis for your business case.

The design parameters below form the basic platform for our plants:

Fuel heat power	25 - 170 MW _{th}
Steam boiler	Water tube boiler with natural circulation
Steam pressure	70 - 142 bar
	Single pressure or double pressure (reheat, e.g. 140 bar and 25 bar)
Steam temperature	Up to 542 °C
Steam quality	According to VGB requirements for turbine operation
Furnace design	Residence time more than 2 seconds above 850 °C
Operating time	At least 8000 hours without shutdown for manual cleaning
Boiler efficiency	91% - 94% depending on fuel moisture
Emission values	Better than European requirements
Fuel flexibility	Fuel moisture content: 10 - 57%
Auxiliary burner	Not necessary
In-house power consumption	<2.0% of fuel heat input
Availability	Better than 98%.

To see some of AET Biomass Boiler Plants, click on the links below:

- [Solvay - Rheinberg](#)
- [PowerCrop - Russi](#)
- [Akuo Energy - CBN](#)
- [JG Pears - Newark](#)
- [Tilbury Green Power - London](#)
- [Østkraft - Rønne](#)
- [ENGIE Cofely - Biolacq Energies](#)
- [ENGIE Cofely - BES VSG](#)
- [ENGIE Cofely - SODC Orléans](#)



The Cofely GDF-SUEZ cogeneration plant is being built in Orleans, France.

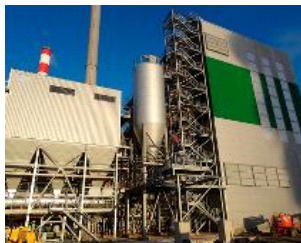


AET Biomass Boilers can burn a wide variety of biomass fuels.

- [Rothes CoRDe - Speyside](#)
- [Zignago Power](#)
- [ENGIE Cofely - BCN](#)
- [Western Wood Energy Plant](#)
- [FunderMax - Neudörfel](#)
- [Linz-Mitte](#)
- [Best Wood Schneider](#)
- [Swiss Krono - Heiligengrabe](#)
- [Pfleiderer – Gütersloh](#)
- [EPR Glanford - Scunthorpe](#)
- [Pfleiderer – Neumarkt](#)
- [Egger – Pannovosges](#)

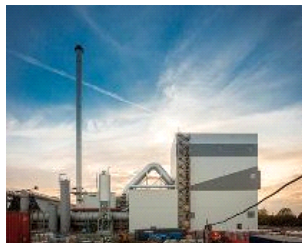
LATEST COMMISSIONED PROJECTS

[> GO TO ALL BIOMASS PROJECTS](#)



The Biolacq Energies project, in Lacq, is a biomass-fired CHP plant of 54 MW, that utilises forestry wood, and clean, uncontaminated residues from wood processing.

[Read more about Biolacq](#)



Tilbury Green Power is a 125 MW waste wood-fired plant, which commenced operations in 2017.

[Read more about Tilbury Green Power](#)



JG Pears – Newark is a 42 MW MBM-fired cogeneration plant, which commenced operations in 2018.

[Read more about JG Pears - Newark](#)



Akuo Energy - CBN is a 63 MW wood-fired cogeneration plant, which commenced operations in early 2019.

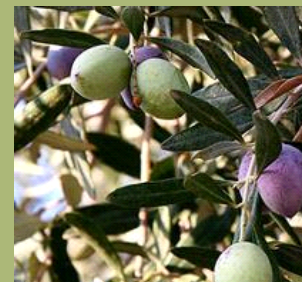
[Read more about Akuo Energy - CBN](#)

FOCUS ON

[> Read full Focus](#) [> Go to Archive](#)

Zignago Power s.r.l.–successfully producing Green Energy in Italy

The 49 MW Zignago Biomass power plant in Italy, owned and managed by Zignago Power s.r.l., belonging to the Marzotto family empire, has since its installation in 2013 been running with a very high availability (98,8%). The plant utilises wood residues and agricultural waste such as straw, miscanthus and maize. [>Read more](#)



[www.aet-biomass.com](#) // [Home](#) // [Products](#) // [Biomass Boiler Plants](#)

[> Privacy and Cookie Policy](#) // [> Sitemap](#) // [> Terms of use](#) // © AET

Aalborg Energie Teknik a/s Alfred Nobels Vej 21 F 9220 Aalborg East, Denmark Tel +45 96 32 86 00 aet@aet-biomass.com